

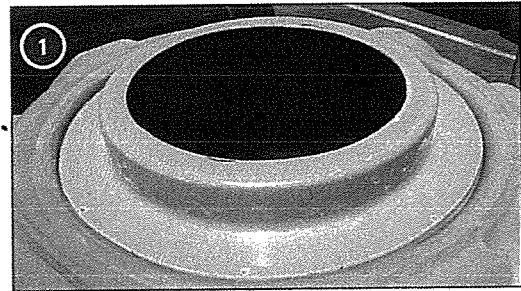
Roth Tank Adapter

Installation Instructions for the Roth Tank Adapter

Oreco's Roth Tank Adapter Kit helps to ensure a watertight seal between a Roth tank and an access riser. Access risers provide access to septic tank openings, simplifying inspection and maintenance. The adapter kit includes an adapter, eight stainless steel screws, and $\frac{3}{4}$ " wide \times $\frac{5}{8}$ " thick butyl sealant.

Step 1: Fit Adapter to Tank

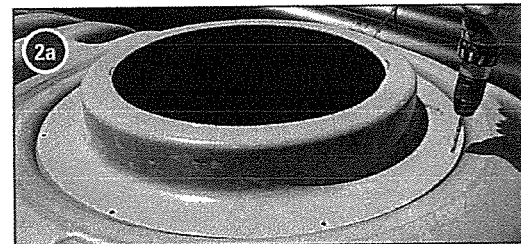
Dry-fit the tank adapter to the tank and center the adapter in the tank opening.



Step 2: Drill Pilot Holes

Step 2a: Using the pre-drilled holes in the adapter as guides, drill $\frac{1}{4}$ " pilot holes through the tank. Be careful not to wallow out the pilot holes.

Step 2b: Remove the adapter and set it aside.

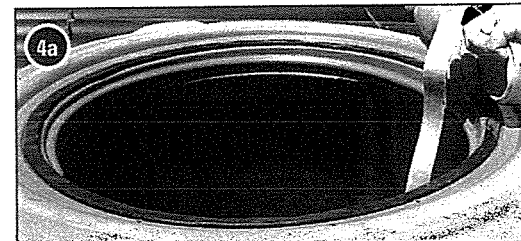


Step 3: Clean Tank Opening

Clean and dry the area around the tank opening where the riser adapter will set, to remove dirt, oils, and any drilling debris.

Step 4: Apply Butyl Sealant

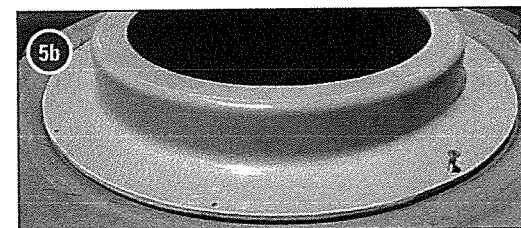
Step 4a: Apply a ring of the butyl sealant around the tank opening as shown. (Against the lip, just inside the circle of pilot holes.)



Step 5: Place Tank Adapter

Step 5a: Place a couple of screws in the adapter to use as guides.

Step 5b: Using the screws as guides, carefully set the adapter in place.



Step 6: Secure Adapter to Tank

Step 6a: Carefully drive the screws into the tank until the screws are just barely snug.

Step 6b: Finish tightening the screws in an alternating pattern around the adapter as you would on an automobile wheel.

NOTE: Due to the nature of HDPE plastic, you may feel the screws begin to strip as you tighten them. This will not harm the threads as long as you don't tighten the screws any further.

Step 7: Install Riser

To install a riser on the Fralo tank adapter, see Instruction Set 2, steps 2b-2d, in *Access Risers and Tank Adapters: Installation Instructions* (NIN-RLA-RR-1).

